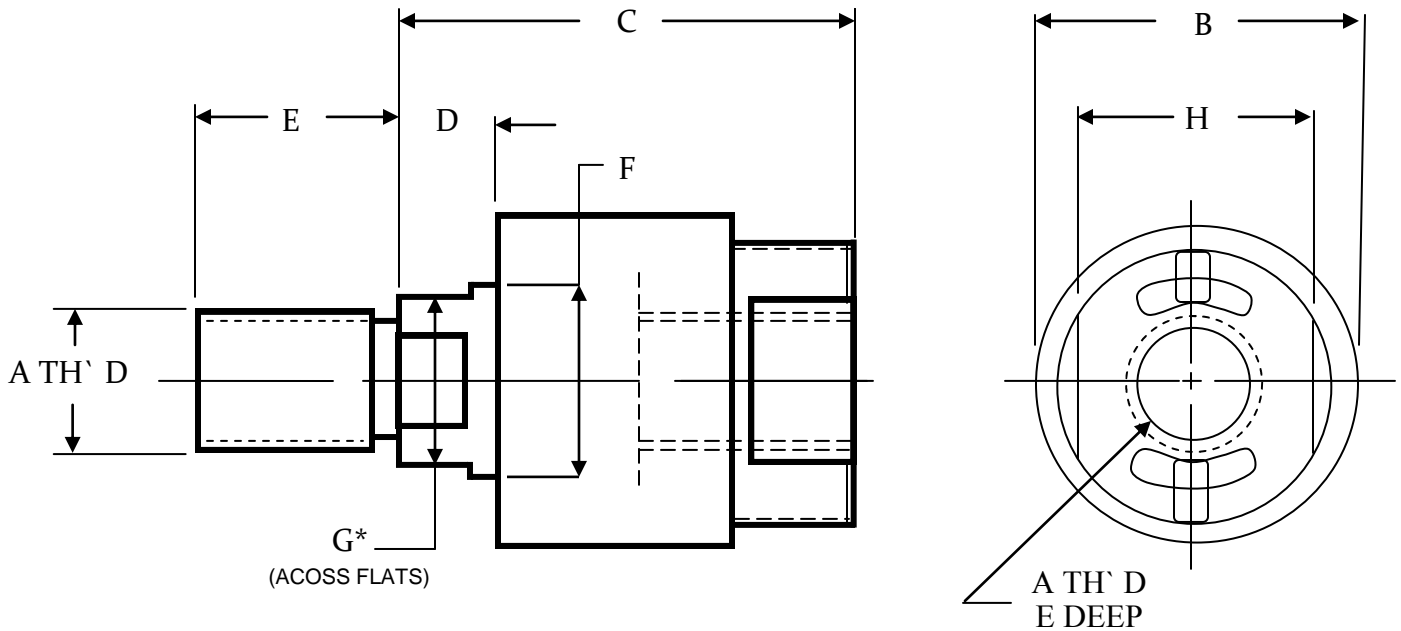


**REALTECH**  
**Linda J Rick**  
 810.287.4710 p  
 810.266.4341 f  
 lindaj.rick@yahoo.com  
 www.Realtechcompany.com

# Linear Alignment Couplers

Also available without lock feature



G\*  
(ACROSS FLATS)

† 4:1 SAFETY FACTOR  
RECOMMENDED

- SPANNER HOLES FOR SIZES 1 7/8—12 AND LARGER

- Locks on rod threads without the use of jam nuts
- Vibration free and shake proof
- Works in both directions
- Has 1/16 axial and 1° spherical movement
- Allows for limited misalignment which in turn reduces seal and bearing wear.

Part #	A	B	C	D	E	F	G	H	Max Pull Load
716-20	7/16 - 20	1 1/4	2	1/2	3/4	5/8	1/2	13/16	2,535
12-20	1/2 - 20	1 1/4	2	1/2	3/4	5/8	1/2	13/16	3,500
34-16	3/14 - 16	1 3/4	2 5/16	1/2	1 1/8	31/32	13/16	1 1/8	8,750
78-14	7/8 - 14	1 3/4	2 5/16	1/2	1 1/8	31/32	13/16	1 1/8	9,750
1-14	1 - 14	2 1/2	2 15/16	17/32	1 5/8	1 11/32	1 5/32	1 5/8	16,125
114-12	1 1/4 - 12	2 1/2	2 15/16	17/32	1 5/8	1 11/32	1 5/32	1 5/8	19,600
112-12	1 1/2 - 12	3 1/4	4 3/8	7/8	2 1/4	1 31/32	1 3/4	2 3/8	34,000
134-12	1 3/4 - 12	3 1/4	4 3/8	1	2 1/4	1 31/32	1 3/4	2 3/8	34,000
178-12	1 7/8 - 12	3 3/4	5 5/8	1	3	2 15/32	-	-	41,250
2-12	2-12	3 3/4	5 5/8	1	3	2 15/32	-	-	41,250
No Lock Feature 214-12	2 1/4 - 12	6 3/4	6 3/8	1	3 1/2	2 3/4	2 3/8	2 7/8	60,000
No Lock Feature 212-12	2 1/2 - 12	7	6 1/2	1	3 1/2	3 1/4	2 7/8	3 3/8	86,250